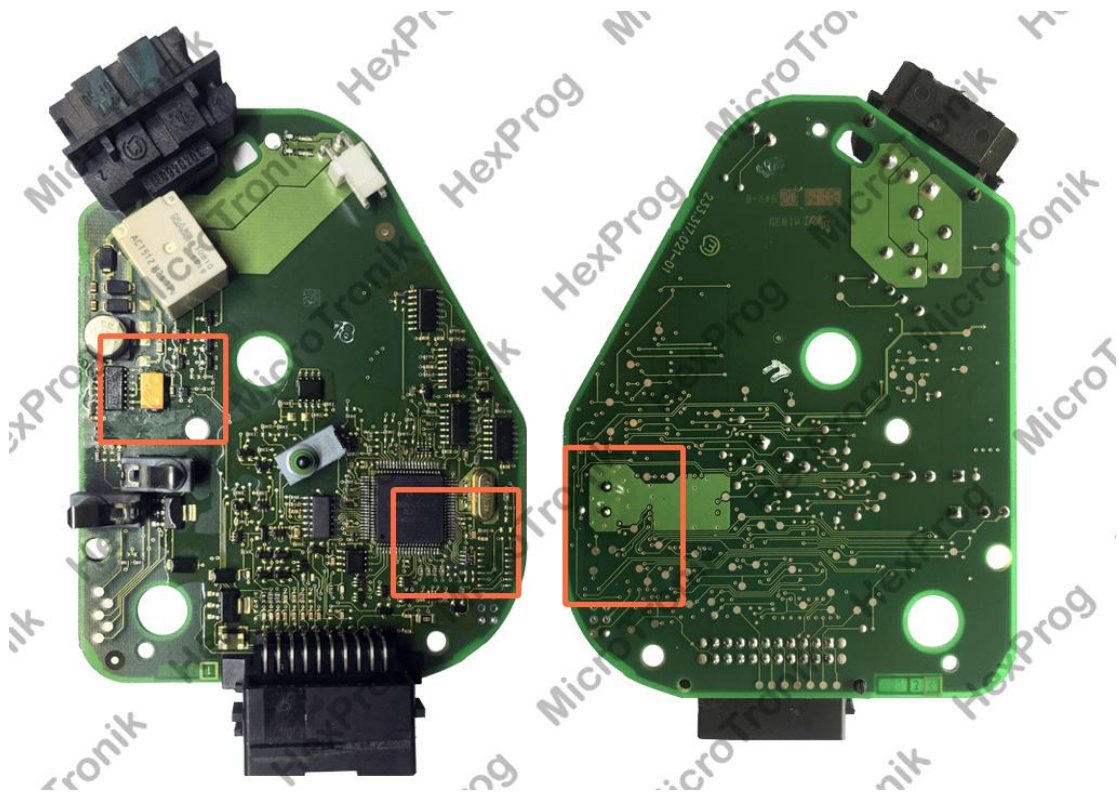


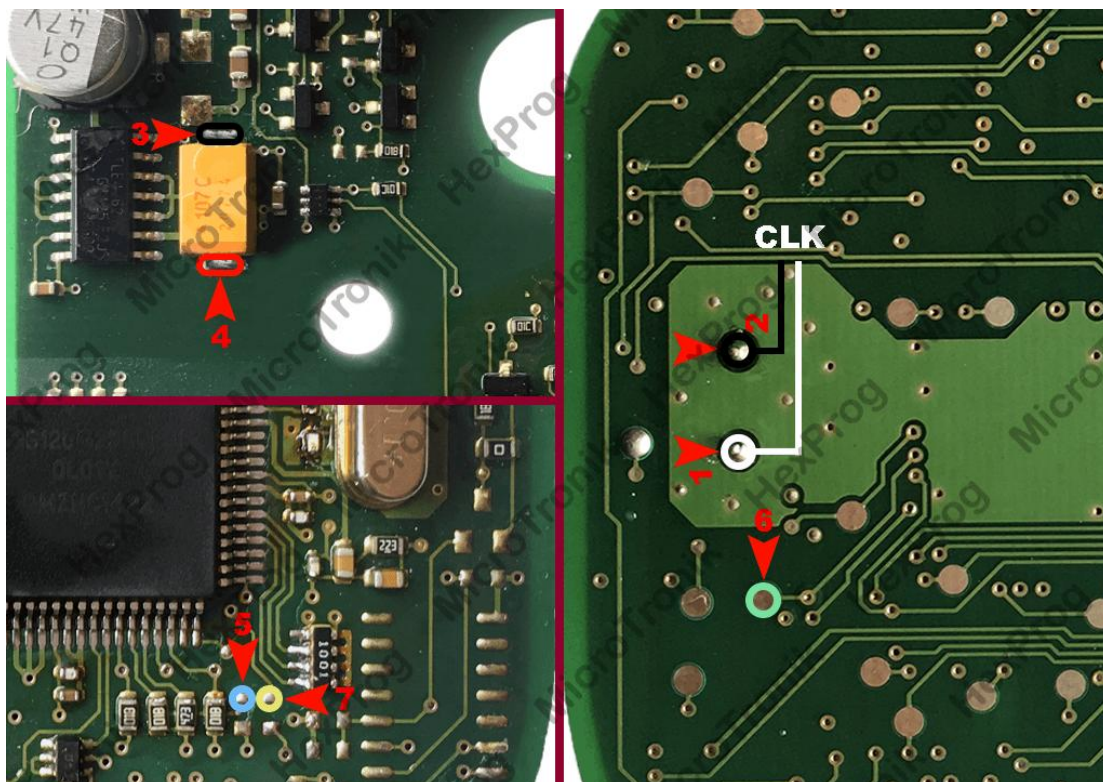
## ESL J518 Mask 0L01Y BDM WIRING

1. Unplug ESL from the car (Careless Removal of the module may cause a damage to the car or the control itself, it must be carried under user's RISK)
2. Remove ESL board from the casing



ESL J518 Mask

3. Solder wires to ESL based on the below connection diagram using BDM cable



### ESL J518 Mask

4. Select the ESL J518/CPU version from HexProg software
5. Do the desired function for read/write ESL in Software
6. Unsolder wires
7. Connect ESL back to car

